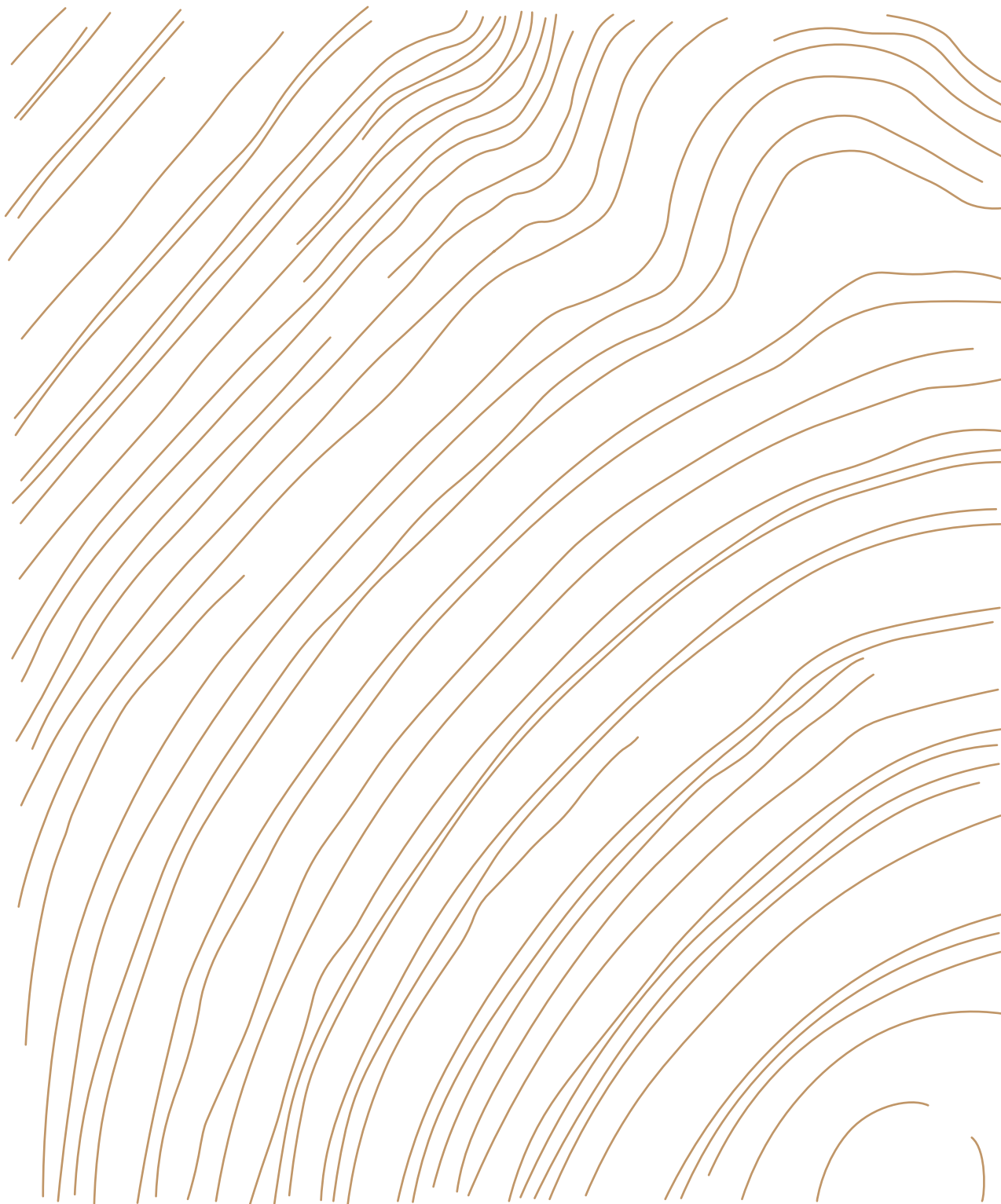

MONTICOLOR



DOLOMIA

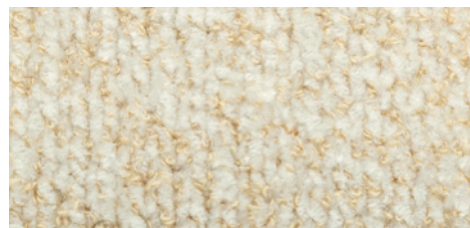
Velvet Bouclé

DOLOMIA

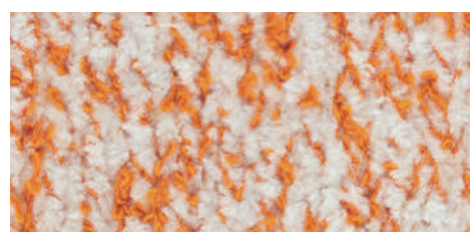
Nm 3800 5

47% Cotone Pettinato - 40% Viscosa - 12% Poliammide - 1% Elastan
47% Combed Cotton - 40% Viscose - 12% Polyamide - 1% Elastan

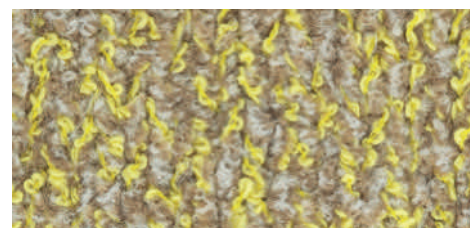
DM01



DM19



DM20

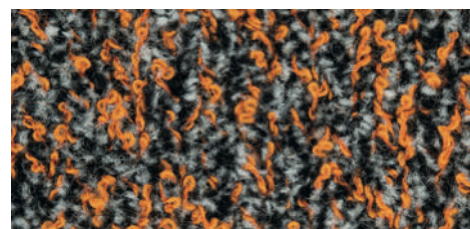


DOLOMIA

Morbida ciniglia si intreccia alle evoluzioni di un filo bouclé creando grafici effetti di movimento. Una freschissima gamma di colori che alterna sfumature vivaci a calde tricromie.

Insolito velluto dalla texture animata per uno spirito mountain-chic.

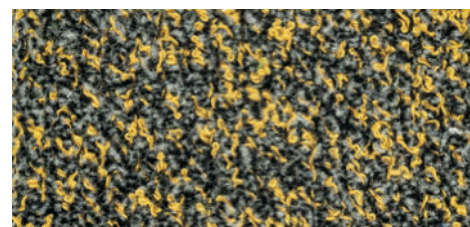
DM21



Soft chenille braided with a vibing bouclé yarn creating graphic effects in movement. An extremely fresh range of colors where lively hues and warm trichrome combinations play.

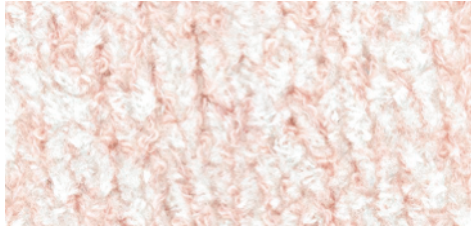
An unexpected velvet with livened up texture for a mountain-chic inspiration.

DM14



MONTICOLOR

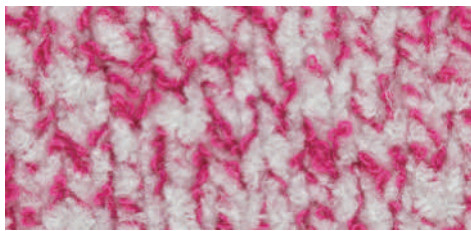
DM22



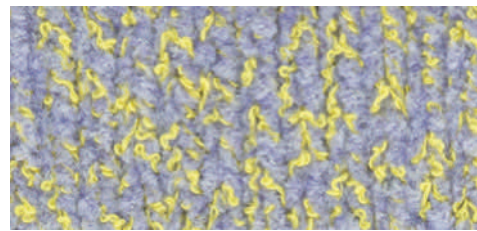
DM26



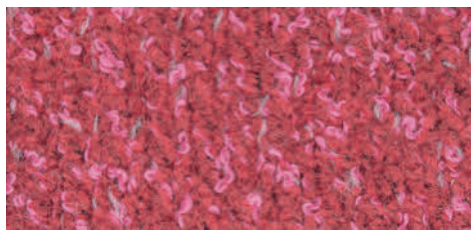
DM23



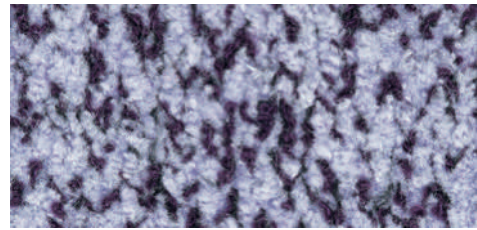
DM27



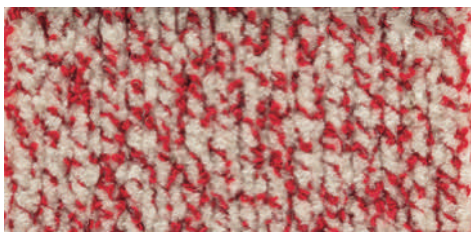
DM24



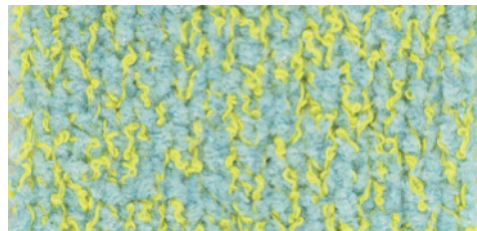
DM28



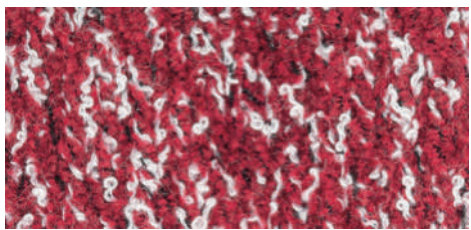
DM04



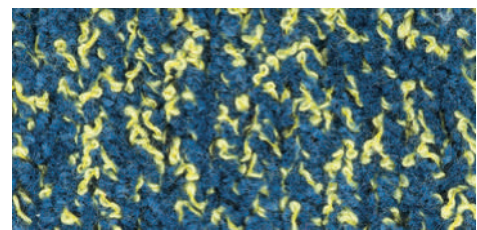
DM29



DM25

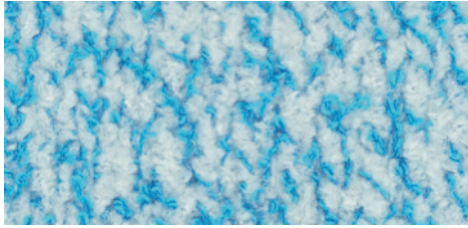


DM30

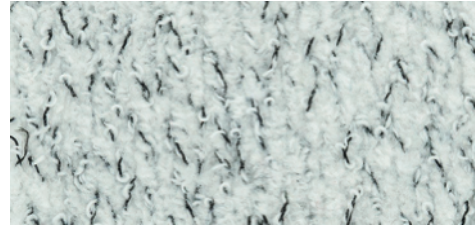


MONTICOLOR

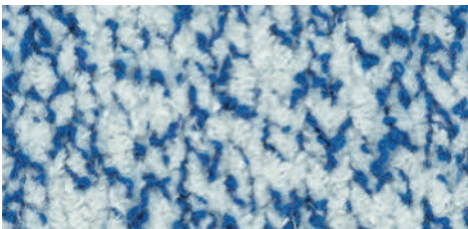
DM31



DM35



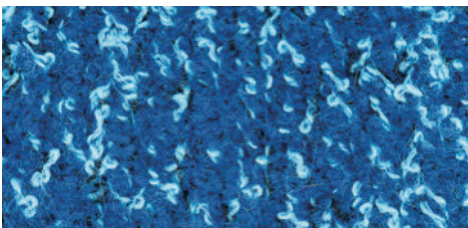
DM32



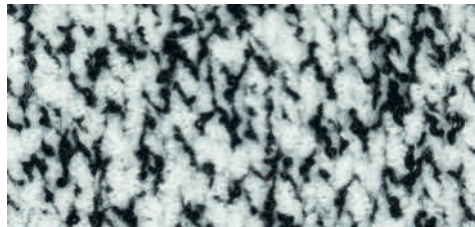
DM03



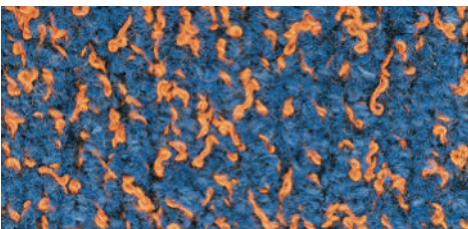
DM33



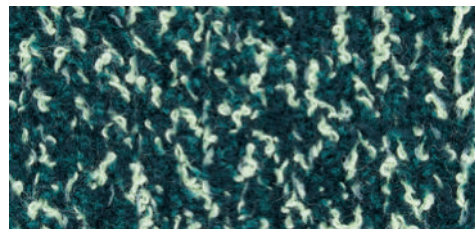
DM36



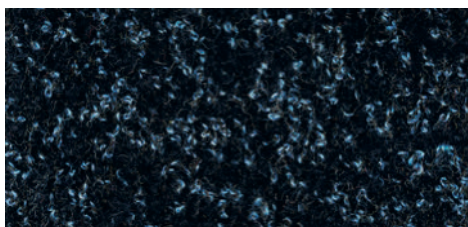
DM34



DM37



DM18



DM09





Composizione: 47% Cotone Pettinato - 40% Viscosa - 12% Poliammide - 1% Elastan
 Colori a Campione: No

SPECIAL CARES:

Il filato ciniglia può presentare leggere differenze di titolo tra rocca e rocca. Per minimizzare differenze di aspetto o irregolarità della superficie si consiglia di verificare sulle macchine che tensioni e passaggi del filo siano sempre regolari. Per evitare stacchi di colore, si consiglia la lavorazione del filato con l'uso minimo di 3 guidafili. I filati in ciniglia presentano un particolare orientamento del pelo e sono da noi forniti con il "verso" pronto per la lavorazione: si sconsiglia di ripassare o dimezzare le rocche (se necessario, i coni parziali devono essere tutti roccati due volte per riportare il verso come sulla rocca originale). Filato con contenuto di elastan: nel calcolo della taglia del capo finito considerare un notevole rientro della maglia dopo trattamento.

Composition: 47% Combed Cotton - 40% Viscose - 12% Polyamide - 1% Elastan
 Customer Colors: No

SPECIAL CARES:

In chenille yarns small count differences from cone to cone may occur. In order to minimize aspect differences or irregularities on the surface, we suggest to check on the machines that tensions and passages of the yarn are always regular. In order to avoid color differences, we recommend to knit the yarn using not less than 3 threadguides. The chenille yarns have a particular hair orientation and are supplied by us with the "direction" ready for processing: it is not recommended to rewind or to part the cones (if necessary, the cones must all be winded twice to return the hair direction as the original). Yarn with elastan content: for garment size calculation please consider a relevant shrinkage after treatment.

SOLIDITÀ (i dati sono da ritenersi valori medi)
 COLOR FASTNESS (the data have to be considered average values)

Lavaggio in acqua Water washing		Lavaggio a secco Dry cleaning		Sudore acido-basico Acid-basic sweat		Sfregamento a secco Dry rubbing	Sfregamento a umido Wet rubbing	Lucente Light
ISO 105/C06		ISO 105/D01		ISO 105/E04		ISO 105/X12	ISO 105/X12	ISO 105/B02
discharge on cotton	color chancing	discharge on cotton	color chancing	discharge on cotton	color chancing	discharge on cotton	discharge on cotton	color chancing
4	4	4	4	4	4	4	3/4 (light colors) 2/3 (medium-dark colors)	3/4 (light colors) 4 (medium-dark colors)

LE SPECIFICHE TECNICHE E LE INFORMAZIONI RIPORTATE IN CARTELLA SONO DA CONSIDERARSI INDICATIVE E POTREBBERO SUBIRE VARIAZIONI NEL TEMPO. SCHEDE TECNICHE AGGIORNATE DISPONIBILI SU RICHIESTA.
 TECHNICAL SPECIFICATIONS AND THE INFORMATION MENTIONED IN THE SHADE CARD SHALL BE CONSIDERED INDICATIVE AND MIGHT UNDERGO SOME CHANGES IN TIME. UPDATED TECHNICAL SHEETS ARE AVAILABLE ON REQUEST.

ETICHETTATURA CONSIGLIATA
 SUGGESTED INTERNATIONAL SYMBOLS

