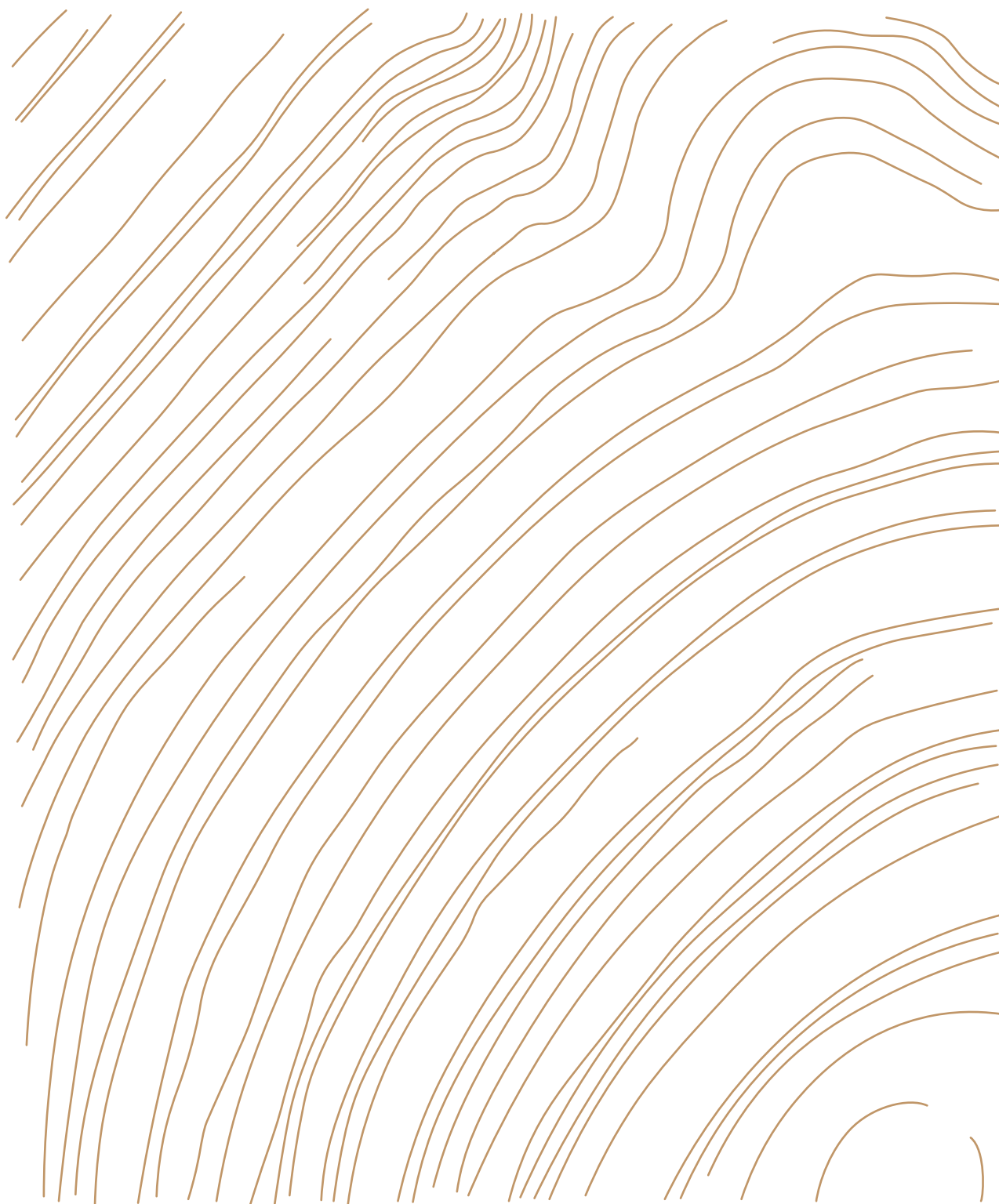


MONTICOLOR



LAMB · BOUCLET

Warm Cotton

LAMB

Nm 12000  7

70% Cotone Pettinato - 25% Poliammide - 5% Elastan
70% Combed Cotton - 25% Polyamide - 5% Elastan

BOUCLET

Nm 5000  5/7

85% Cotone Pettinato - 14% Poliammide - 1% Elastan
85% Combed Cotton - 14% Polyamide - 1% Elastan

Le fibre di cotone conquistano l'inverno.
La lavorazione sotto forma di **stoppino** rende i filati sorprendentemente **voluminosi** ed **estremamente morbidi**.

Il piacere di indossare un materiale caldo che **rispetta la sensibilità della pelle** meglio delle fibre animali.

Comfort e **leggerezza** sono le parole chiave per maglie moderne e dall'aspetto naturale.

Lamb: cotone ad effetto feltrato. Elastico e fine per maglie dai punti sofisticati.

Bouclet: riccioli di caldo cotone con superficie mossa e aspetto bouclé. Colori dalla resa intensa che trasmettono sensazioni positive.

The winter is fascinated by cotton.

*Yarns are made surprisingly **puffy** and **extremely soft** by the fiber roving processing.*

*The pleasure to wear a warm sweater that **respects the skin sensibility** is better than animal fibers.*

***Comfort** and **lightness** are the key words for modern knits with a natural look.*

***Lamb**: cotton with an already made felted effect. Elastic and refined for sophisticated knits stitches.*

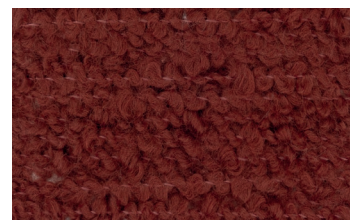
***Bouclet**: warm cotton curls with a wavy surface and a bouclé appearance. Intense colors that transmit positive vibes.*



LM02



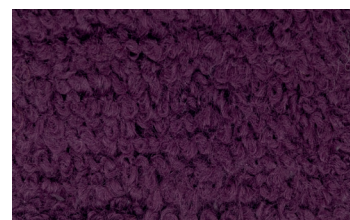
LM32



LM33

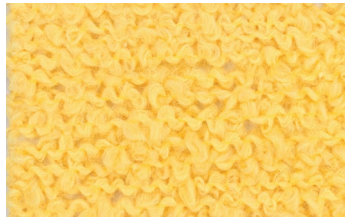


LM34



LM27

MONTICOLOR



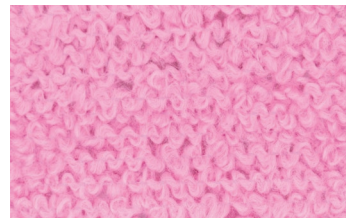
LM35



LM39



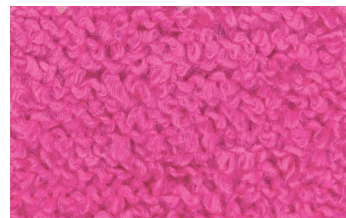
LM36



LM40



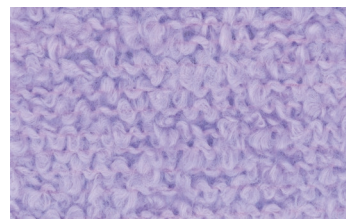
LM37



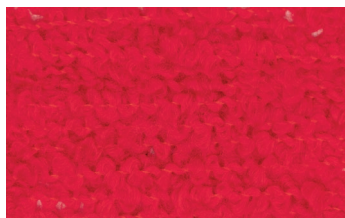
LM11



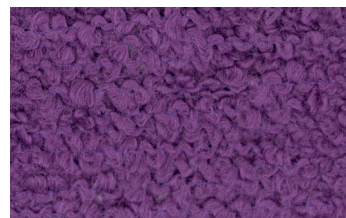
LM38



LM41

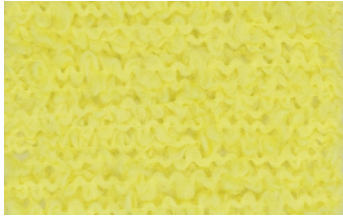


LM26



LM42

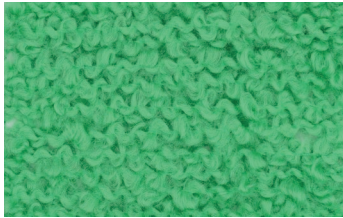
MONTICOLOR



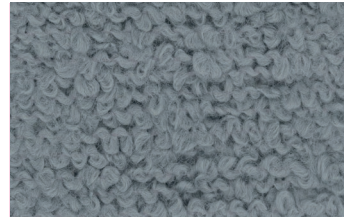
LM43



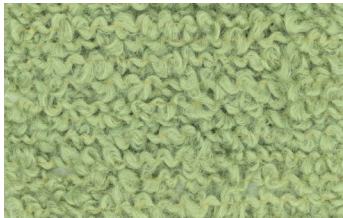
LM01



LM44



LM48



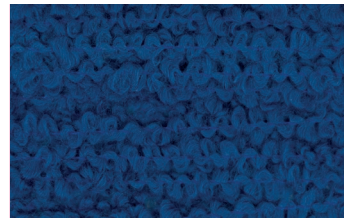
LM45



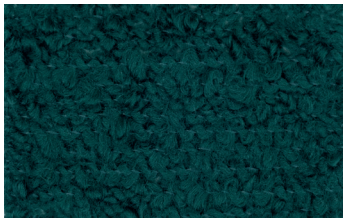
LM49



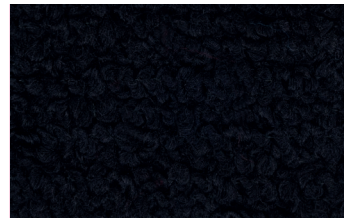
LM46



LM29



LM47



LM24



Composizione: 70% Cotone Pettinato - 25% Poliammide - 5% Elastan
Colori a Campione: Sì

SPECIAL CARES:

I colori di cartella sono da considerarsi indicativi. Filato garzato: si consiglia frequente pulizia delle macchine per evitare buchi nella maglia. I filati garzati presentano un particolare orientamento del pelo e sono da noi forniti con il "verso" pronto per la lavorazione: si sconsiglia di ripassare o dimezzare le rocche (se necessario, i coni parziali devono essere tutti roccati due volte per riportare il verso come sulla rocca originale). Filato con contenuto di elastan: nel calcolo della taglia del capo finito considerare un notevole rientro della maglia dopo trattamento; lavorare su finezza adeguata con gradazione maglia aperta.

Composition: 70% Combed Cotton - 25% Polyamide - 5% Elastan
Customer Colors: Yes

SPECIAL CARES:

Shade card colors should be considered just as an indication. Gauzed yarn: we recommend frequent machines cleaning to avoid dust accumulation. The gauzed yarns have a particular hair orientation and are supplied by us with the "direction" ready for processing: it is not recommended to rewind or to part the cones (if necessary, the cones must all be winded twice to return the hair direction as the original). Yarn with elastan content: for garment size calculation please consider a relevant shrinkage after treatment; knit the yarn on adequate gauge with wide knit graduation.

SOLIDITÀ (i dati sono da ritenersi valori medi)
COLOR FASTNESS (the data have to be considered average values)

Lavaggio in acqua Water washing		Lavaggio a secco Dry cleaning		Sudore acido-basico Acid-basic sweat		Sfregamento a secco Dry rubbing	Sfregamento a umido Wet rubbing	Luce Light
ISO 105/C06		ISO 105/D01		ISO 105/E04		ISO 105/X12	ISO 105/X12	ISO 105/B02
discharge on cotton	color chancing	discharge on cotton	color chancing	discharge on cotton	color chancing	discharge on cotton	discharge on cotton	color chancing
4	4	4	4	3/4	3/4	4	3/4 (light colors) 2/3 (medium-dark colors)	3 (light colors) 4 (medium-dark colors)

LE SPECIFICHE TECNICHE E LE INFORMAZIONI RIPORTATE IN CARTELLA SONO DA CONSIDERARSI INDICATIVE E POTREBBERO SUBIRE VARIAZIONI NEL TEMPO. SCHEDE TECNICHE AGGIORNATE DISPONIBILI SU RICHIESTA.
TECHNICAL SPECIFICATIONS AND THE INFORMATION MENTIONED IN THE SHADE CARD SHALL BE CONSIDERED INDICATIVE AND MIGHT UNDERGO SOME CHANGES IN TIME. UPDATED TECHNICAL SHEETS ARE AVAILABLE ON REQUEST.

ETICHETTATURA CONSIGLIATA
SUGGESTED INTERNATIONAL SYMBOLS





Composizione: 85% Cotone Pettinato - 14% Poliammide - 1% Elastan
Colori a Campione: Sì

SPECIAL CARES:

Filato con contenuto di elastan: nel calcolo della taglia del capo finito considerare un notevole rientro della maglia dopo trattamento; lavorare su finezza adeguata con gradazione maglia aperta. Filato bouclè con effetto voluminoso. Su finezza 7, per punti complessi (es. links-links), potrebbero verificarsi errori di trasporto. L'idoneità del filo al tipo di punto o struttura che si vuole realizzare è soggetta alla verifica da parte del cliente.

Composition: 85% Combed Cotton - 14% Polyamide - 1% Elastan
Customer Colors: Yes

SPECIAL CARES:

Yarn with elastan content: for garment size calculation please consider a relevant shrinkage after treatment; knit the yarn on adequate gauge with wide knit graduation. Bouclè yarn with voluminous effect. For complex stitches on gauge 7 (eg. links-links) transport errors may occur. The yarn behavior compatibility referring to the knit structure is subject to verification by the customer.

SOLIDITÀ (i dati sono da ritenersi valori medi)
COLOR FASTNESS (the data have to be considered average values)

Lavaggio in acqua Water washing		Lavaggio a secco Dry cleaning		Sudore acido-basico Acid-basic sweat		Sfregamento a secco Dry rubbing	Sfregamento a umido Wet rubbing	Luce Light
ISO 105/C06		ISO 105/D01		ISO 105/E04		ISO 105/X12	ISO 105/X12	ISO 105/B02
discharge on cotton	color chancing	discharge on cotton	color chancing	discharge on cotton	color chancing	discharge on cotton	discharge on cotton	color chancing
4	4	4	4	3/4	3/4	4	3/4 (light colors) 2/3 (medium-dark colors)	3 (light colors) 4 (medium-dark colors)

LE SPECIFICHE TECNICHE E LE INFORMAZIONI RIPORTATE IN CARTELLA SONO DA CONSIDERARSI INDICATIVE E POTREBBERO SUBIRE VARIAZIONI NEL TEMPO. SCHEDE TECNICHE AGGIORNATE DISPONIBILI SU RICHIESTA.
TECHNICAL SPECIFICATIONS AND THE INFORMATION MENTIONED IN THE SHADE CARD SHALL BE CONSIDERED INDICATIVE AND MIGHT UNDERGO SOME CHANGES IN TIME. UPDATED TECHNICAL SHEETS ARE AVAILABLE ON REQUEST.

ETICETTATURA CONSIGLIATA
SUGGESTED INTERNATIONAL SYMBOLS




ON REQUEST

