

---

# MONTICOLOR

---



---

# MOSS

---

*Spongy pop*

*Version 3.0*

# MOSS

Nm 2500 3/5

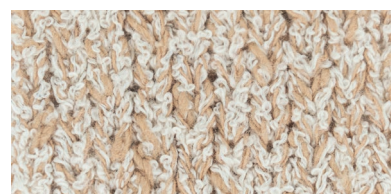
80% Cotone Pettinato - 20% Poliammide

80% Combed Cotton - 20% Polyamide

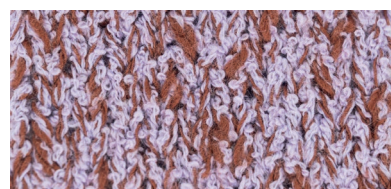
MB01



MB02



MB03



**Catenella tubolare**, con un insolito intrecciarsi di fine bouclé, mosso da giocosi ingrossamenti di cotone.

Leggerezza e movimenti di colore si intercalano in un filato areato dal volume spugnoso.

Stile fresco, aspetto di materia irregolare e texture grintosa.

MB04



---

*An unusual combination of fine bouclé and playful cotton slub, twisted as a tubular chain.*

*Color movements and lightness crossed in a spongy volume yarn.*

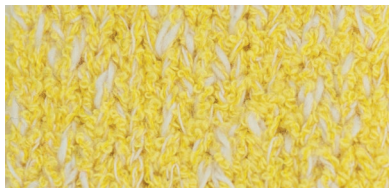
*fresh style, irregular materials look and gritty texture.*

MB05



MONTICOLOR

MB16



MB06



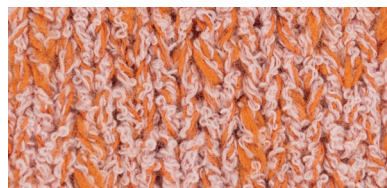
MB11



MB20



MB09



MB12



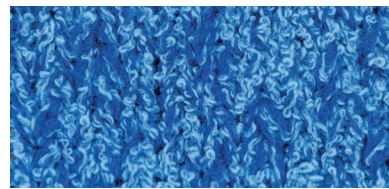
MB18



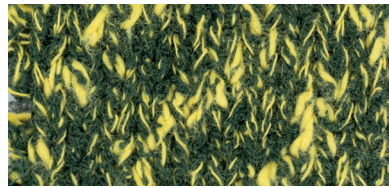
MB08



MB14



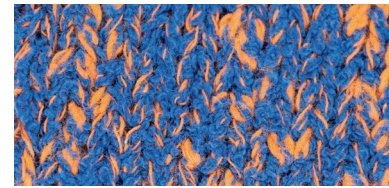
MB19



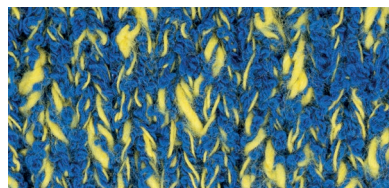
MB07



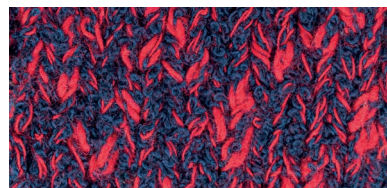
MB10



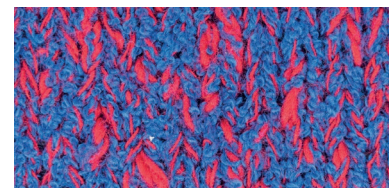
MB17



MB15



MB13





Composizione : 80% Cotone Pettinato - 20% Poliammide  
Colori a Campione: No

**SPECIAL CARES:**

Filato soggetto a restringimenti diversi tra colore e colore; verificare prima della messa in lavorazione di ogni partita che le regolazioni delle macchine siano idonee all'ottenimento della taglia desiderata. Il filato presenta tendenza alla torsione in maglia. L'utilizzo in maglieria è quindi soggetto a verifica da parte del cliente dell'idoneità del filo al tipo di punto o struttura che si vuole realizzare. Il filato presenta una distribuzione dei colori irregolare e non omogenea. Queste sfumature/striature sono da considerarsi caratteristiche e non difetto.

Composition: 80% Combed Cotton - 20% Polyamide  
Customer Colors: No

**SPECIAL CARES:**

Yarn subject to different shrinkage depending on color; before knitting each lot, we recommend to test machine settings to make sure they are suitable for obtaining the desired garment size. The yarn shows tendency to torque the knit. The use for knitwear is subjected to verification by the customers about the yarn suitability to the kind of stitch or structure realized. This yarn has an irregular color distribution. This kind of shades/stripes shall be considered a yarn feature, not a fault.

**SOLIDITÀ** (i dati sono da ritenersi valori medi)  
**COLOR FASTNESS** (the data have to be considered average values)

Lavaggio in acqua Water washing		Lavaggio a secco Dry cleaning		Sudore acido-basico Acid-basic sweat		Sfregamento a secco Dry rubbing	Sfregamento a umido Wet rubbing	Luce Light
ISO 105/C06		ISO 105/D01		ISO 105/E04		ISO 105/X12	ISO 105/X12	ISO 105/B02
discharge on cotton	color chancing	discharge on cotton	color chancing	discharge on cotton	color chancing	discharge on cotton	discharge on cotton	color chancing
4	4	4	4	4	4	4	3/4 (light colors) 2/3 (medium-dark colors)	3/4 (light colors) 4 (medium-dark colors)

LE SPECIFICHE TECNICHE E LE INFORMAZIONI RIPORTATE IN CARTELLA SONO DA CONSIDERARSI INDICATIVE E POTREBBERO SUBIRE VARIAZIONI NEL TEMPO. SCHEDE TECNICHE AGGIORNATE DISPONIBILI SU RICHIESTA.  
TECHNICAL SPECIFICATIONS AND THE INFORMATION MENTIONED IN THE SHADE CARD SHALL BE CONSIDERED INDICATIVE AND MIGHT UNDERGO SOME CHANGES IN TIME. UPDATED TECHNICAL SHEETS ARE AVAILABLE ON REQUEST.

ETICHETTATURA CONSIGLIATA  
SUGGESTED INTERNATIONAL SYMBOLS



**better  
cotton**  
ON REQUEST

