
MONTICOLOR



TAWASHI

Organic Stretch Bouclé

Version 3.1

MONTICOLOR

TAWASHI

Filato ispirato alla tradizione giapponese delle **spugne tawashi**.

Caratteristici micro-riccioli formano un **dolce effetto bouclè** reso **avvolgente** dall'introduzione di un componente elastico.

La natura di cotone biologico certificato **OCS** (Organic Content Standard) e la tintura **GOTS** completano la percezione di **morbida sofficià** e **volume** delle spugne a contatto con la pelle.

*Yarn inspired by the Japanese tradition of **tawashi sponges**.*

*Distinctive micro curls form a **sweet bouclè effect**, making it **enveloping** thanks to the introduction of an elastic component.*

*The nature of **OCS** (Organic Content Standard) certified organic cotton and the **GOTS** dye complete the perception of **smoothy softness** and **volume** of sponges in contact with the skin.*

TAWASHI Nm 18000 縲 12

74% Cotone Biologico - 25% Poliammide - 1% Elastan

74% Organic Cotton - 25% Polyamide - 1% Elastan

TH13



TH07



TH01
RAW-WHITE



TH08



TH02



TH09



TH03



TH39



TH38



TH17



TH06

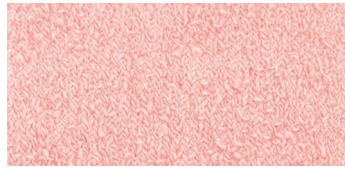


TH18

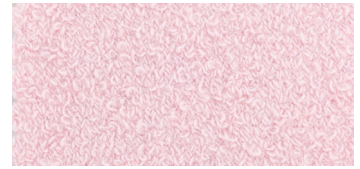


MONTICOLOR

TH40



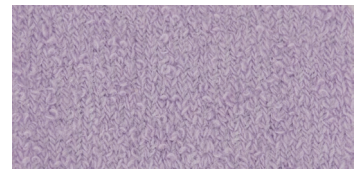
TH20



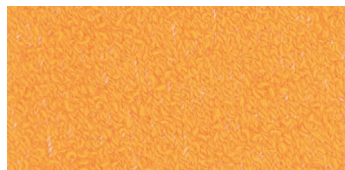
TH41



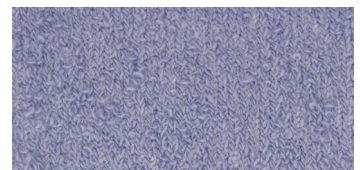
TH45



TH10



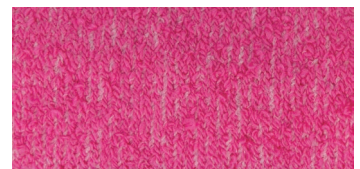
TH46



TH42



TH47



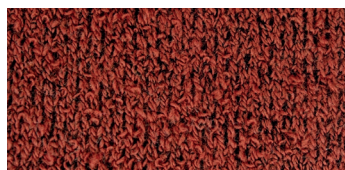
TH43



TH23



TH44



TH24

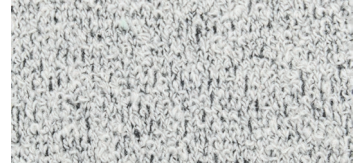


MONTICOLOR

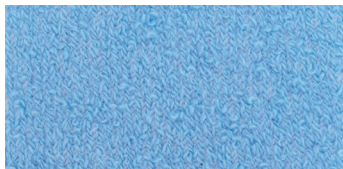
TH26



TH31



TH48



TH50



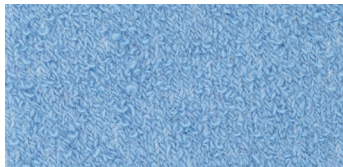
TH49



TH34



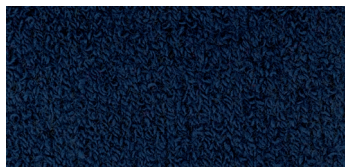
TH27



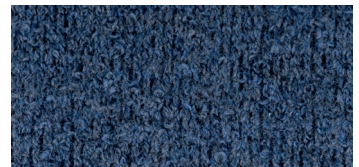
TH35



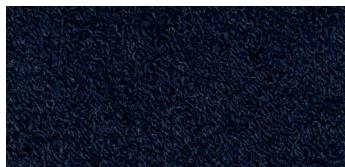
TH29



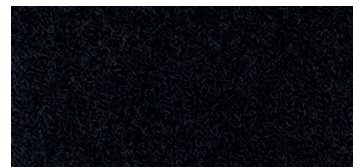
TH51



TH30



TH36





Composizione: 74% Cotone Biologico - 25% Poliammide - 1% Elastan
Colori a Campione: No

SPECIAL CARES:

I colori di cartella sono da considerarsi indicativi. Sono possibili limitazioni nella riproducibilità del tono colore causa uso coloranti compatibili con disciplinare GOTS. Filato elastico soggetto a restringimenti diversi tra colore e colore; calcolare un notevole rientro e verificare prima della messa in lavorazione di ogni partita che le regolazioni delle macchine siano idonee all'ottenimento della taglia desiderata. Il GREGGIO RAW-WHITE, non avendo subito trattamento di tintura, ha un comportamento diverso dalle varianti tinte e può presentare variazioni di tono da lotto a lotto. Il filato presenta tendenza alla torsione in maglia. L'utilizzo in maglieria è quindi soggetto a verifica da parte del cliente dell'idoneità del filo al tipo di punto o struttura che si vuole realizzare. Si raccomanda l'utilizzo a più guidafili.

Composition: 74% Organic Cotton - 25% Polyamide - 1% Elastan
Customer Colors: No

SPECIAL CARES:

Shade card colors should be considered just as an indication. Color shade reproducibility might undergo certain limitations due to GOTS regulation restrictions. Extremely linear and slippery yarn: in order to reduce possible irregularities of the surface, we recommend to check on the machines that tensions and yarn passages are adequately set. The RAW-WHITE variant has a different behavior compared to the dyed colors as it didn't undergo the dyeing process and can therefore show variations in shade from one lot to another. The yarn shows tendency to torque the knit. The use for knitwear is subjected to verification by the customers about the yarn suitability to the kind of stich or structure realized. We recommend to use more threadguides.

SOLIDITÀ (i dati sono da ritenersi valori medi)
COLOR FASTNESS (the data have to be considered average values)

Lavaggio in acqua Water washing		Lavaggio a secco Dry cleaning		Sudore acido-basico Acid-basic sweat		Sfregamento a secco Dry rubbing	Sfregamento a umido Wet rubbing	Luce Light
ISO 105/C06		ISO 105/D01		ISO 105/E04		ISO 105/X12	ISO 105/X12	ISO 105/B02
discharge on cotton	color chancing	discharge on cotton	color chancing	discharge on cotton	color chancing	discharge on cotton	discharge on cotton	color chancing
4	4	4	4	4	4	4	3/4 (light colors) 2/3 (medium-dark colors) 2/3 (mélange)	3/4 (light colors) 4 (medium-dark colors)

LE SPECIFICHE TECNICHE E LE INFORMAZIONI RIPORTATE IN CARTELLA SONO DA CONSIDERARSI INDICATIVE E POTREBBERO SUBIRE VARIAZIONI NEL TEMPO. SCHEDE TECNICHE AGGIORNATE DISPONIBILI SU RICHIESTA.
TECHNICAL SPECIFICATIONS AND THE INFORMATION MENTIONED IN THE SHADE CARD SHALL BE CONSIDERED INDICATIVE AND MIGHT UNDERGO SOME CHANGES IN TIME. UPDATED TECHNICAL SHEETS ARE AVAILABLE ON REQUEST.

CAMPIONE GRATUITO - FREE SAMPLE

ETICHETTATURA CONSIGLIATA
SUGGESTED INTERNATIONAL SYMBOLS



**COLORS
FOR LIFE**

