

Whirlpool

VERSION 1.1

Color Stock



for sampling

17,374 mm

MONTECOLOR



Whirlpool

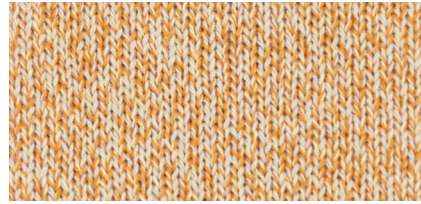
Nm 3/50  12

NUANCED MOULINÈ

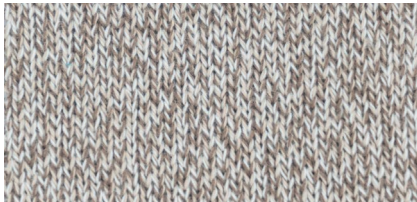
100% cotone pettinato
100% combed cotton



WH01



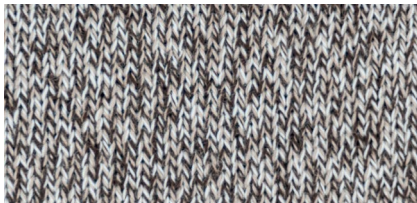
WH06



WH02



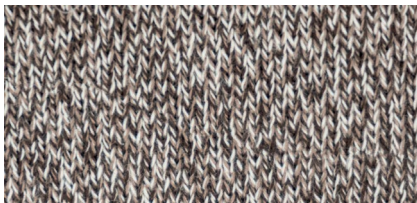
WH31



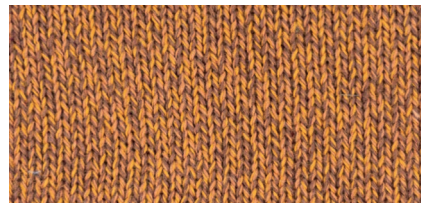
WH03



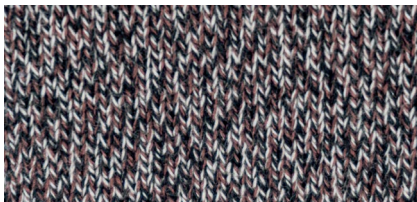
WH32



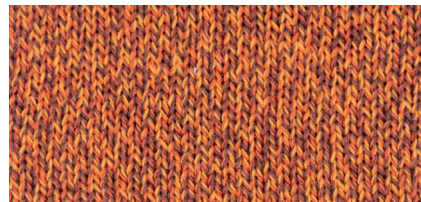
WH04



WH08



WH05



WH33

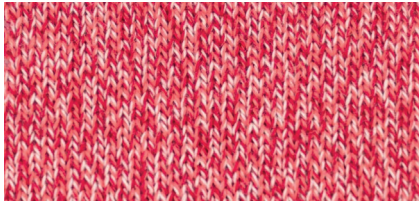
MONTICOLOR

Whirlpool

Nm 3/50  12

NUANCED MOULINÈ

100% cotone pettinato
100% combed cotton



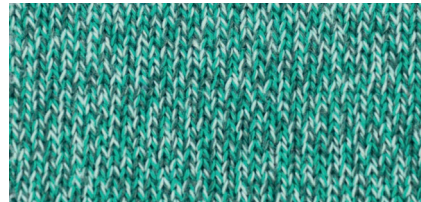
WH14



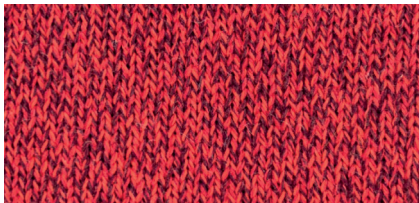
WH09



WH34



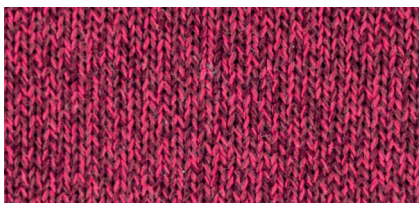
WH10



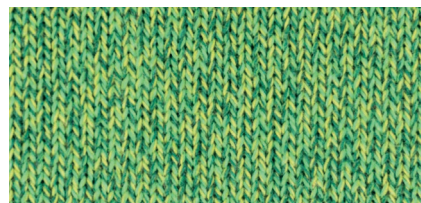
WH15



WH37



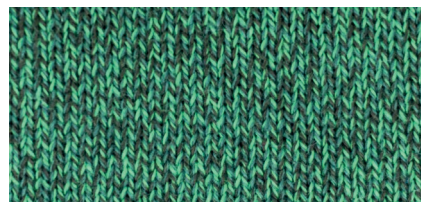
WH35



WH38



WH36



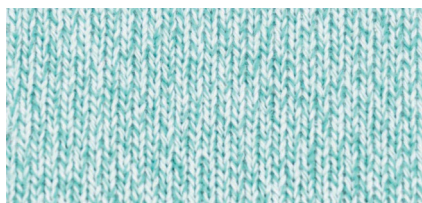
WH39

Whirlpool

Nm 3/50  12

NUANCED MOULINÈ

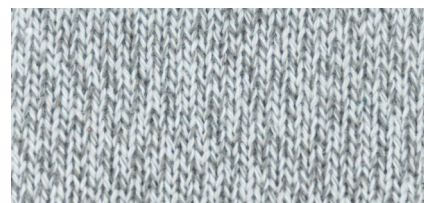
100% cotone pettinato
100% combed cotton



WH16



WH21



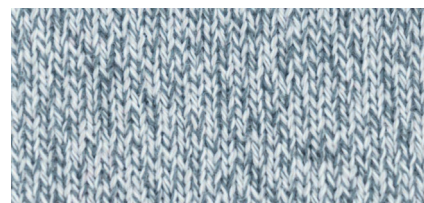
WH26



WH19



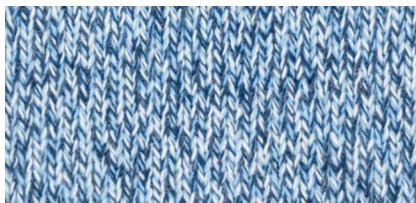
WH22



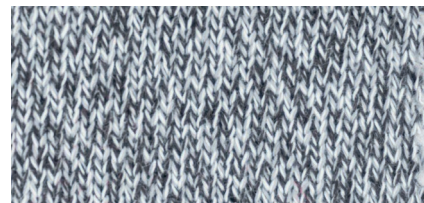
WH27



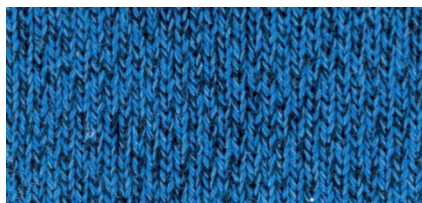
WH18



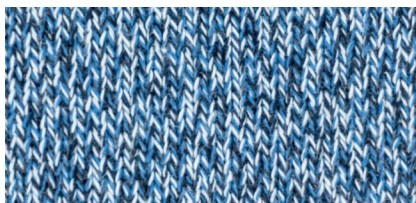
WH23



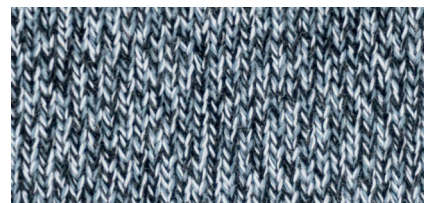
WH28



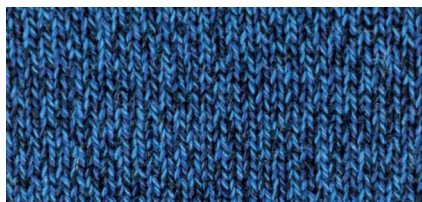
WH20



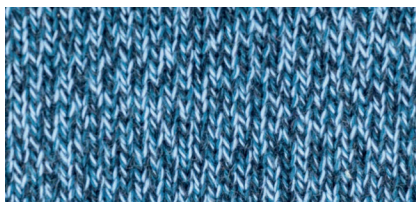
WH24



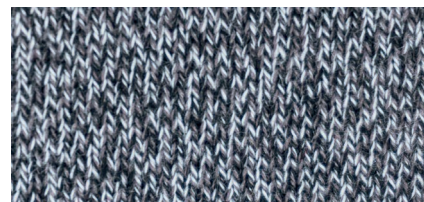
WH29



WH40



WH25



WH30

MONTICOLOR

WHIRLPOOL Nm 3/50  12

COMPOSIZIONE

100% cotone pettinato

COLORI A CAMPIONE

no

COMPOSITION

100% combed cotton

SAMPLE COLORS






no

SPECIAL CARES:

Il filato presenta una distribuzione dei colori irregolare e non omogenea. Queste sfumature/striature sono da considerarsi caratteristiche e non difetto.

This yarn has an irregular color distribution. This kind of shades/stripes shall be considered a yarn feature, not a fault.

Knitting Finezza - Gauge

REQUISITI REQUIREMENTS	* valori medi / average values	SCARICO SU COTONE* DISCHARGE ON COTTON*	DEGRADO* COLOUR CHANGING*
Solidità del colore al lavaggio in acqua a 40° Colour fastness to washing in water 40°	ISO 105/C06	4	4
Solidità del colore al lavaggio a secco Colour fastness to dry cleaning	ISO 105/D01	4	4
Solidità del colore al sudore acido-basico Colour fastness to acid-basic sweat	ISO 105/E04	4	4
Solidità del colore allo sfregamento Colour fastness to rubbing a secco / dry a umido / wet Chiari / Light Medi-Scuri / Medium-Dark	ISO 105/X12	4 3/4 2/3	
Solidità del colore alla luce Colour fastness to light Chiari / Light Medi-Scuri / Medium-Dark	ISO 105/B02		3/4 4/5
ETICHETTATURA CONSIGLIATA SUGGESTED INTERNATIONAL SYMBOLS			
    			

LE SPECIFICHE TECNICHE E LE INFORMAZIONI RIPORTATE IN CARTELLA SONO DA CONSIDERARSI INDICATIVE E POTREBBERO SUBIRE VARIAZIONI NEL TEMPO. SCHEDE TECNICHE AGGIORNATE DISPONIBILI SU RICHIESTA.

TECHNICAL SPECIFICATIONS AND THE INFORMATION MENTIONED IN THE SHADE CARD SHALL BE CONSIDERED INDICATIVE AND MIGHT UNDERGO SOME CHANGES IN TIME. UPDATED TECHNICAL SHEETS ARE AVAILABLE ON REQUEST.

MONTICOLOR

MONTICOLOR S.p.A.

Montirone (BS), Italy - Tel. +39 030 217 88 11

www.monticolor.com - info@monticolor.com

BCI Better Cotton Initiative
ON REQUEST

OEKO-TEX®
CONFIDENCE IN TEXTILES
STANDARD 100
044592.0 CENTROCOT
Tested for harmful substances.
www.oeko-tex.com/standard100